



# Autodesk® Revit® Architecture 2011

What's New

Image courtesy of Cannon Design

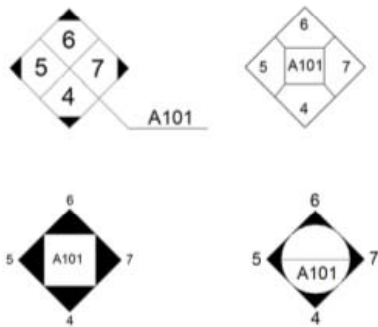
# Top Features

Autodesk® Revit® Architecture 2011 Software

## Ease of Use

### Enhanced Productivity

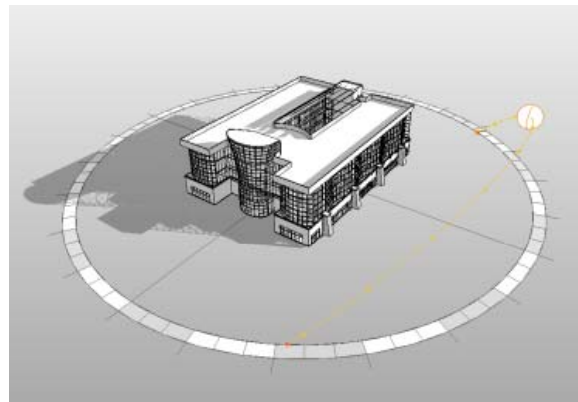
- User interface (UI) improvements
- Small enhancements (design and documentation)
- Family editor enhancements
- Conceptual design improvements
- **S** Model review
- **S** Autodesk® Revit® DB Link



## Analysis and Visualization

### Extended Design Workflow

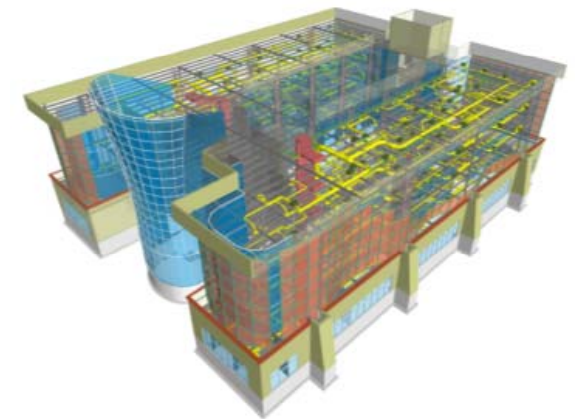
- Sun path simulation
- **S** Access to Autodesk® Green Building Studio® web-based services
- New view styles
- Rendering enhancements



## Large Team Workflow And Performance

### Amplified Efforts

- Linked models improvements
- Performance Improvements
- Interoperability with Autodesk® Inventor® software
- API (application programming interface) enhancements



**S** = Feature available via Subscription

# Ease of Use



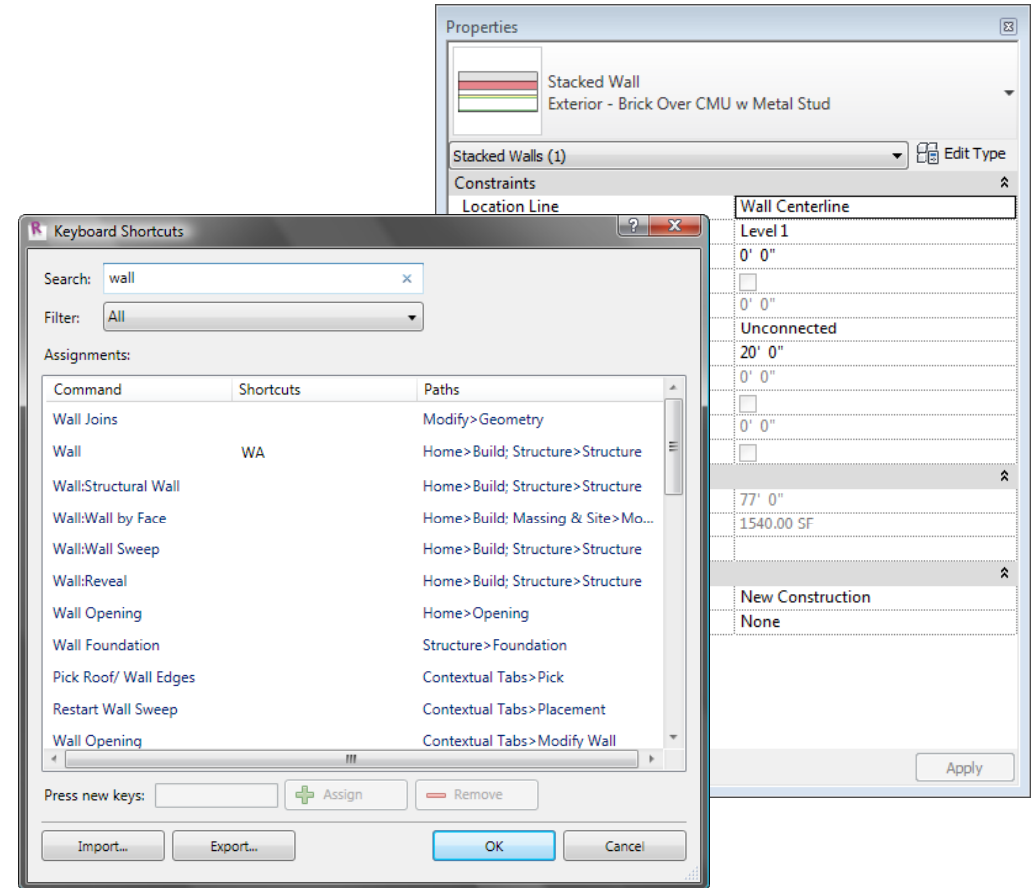
Image courtesy of Cannon Design

# Design Productivity

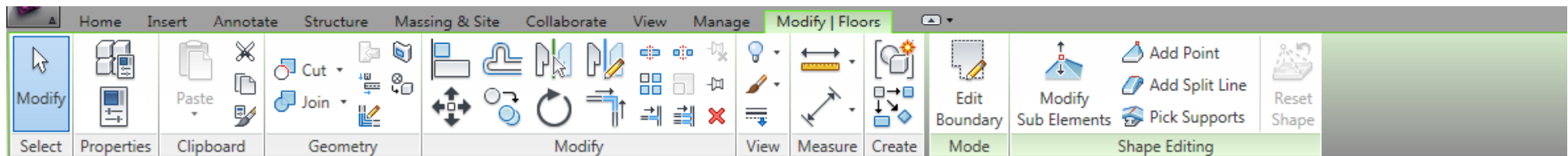
Autodesk Revit Architecture 2011

## User Interface Improvements

- Properties Palette
- Quick Access Toolbar (QAT) improvements
- Keyboard shortcuts UI
- Modify and Contextual tabs
- Repeat last command tool\*
- Element selection options\*
- Status Bar tools



*Quicker and easier access to tools and settings*



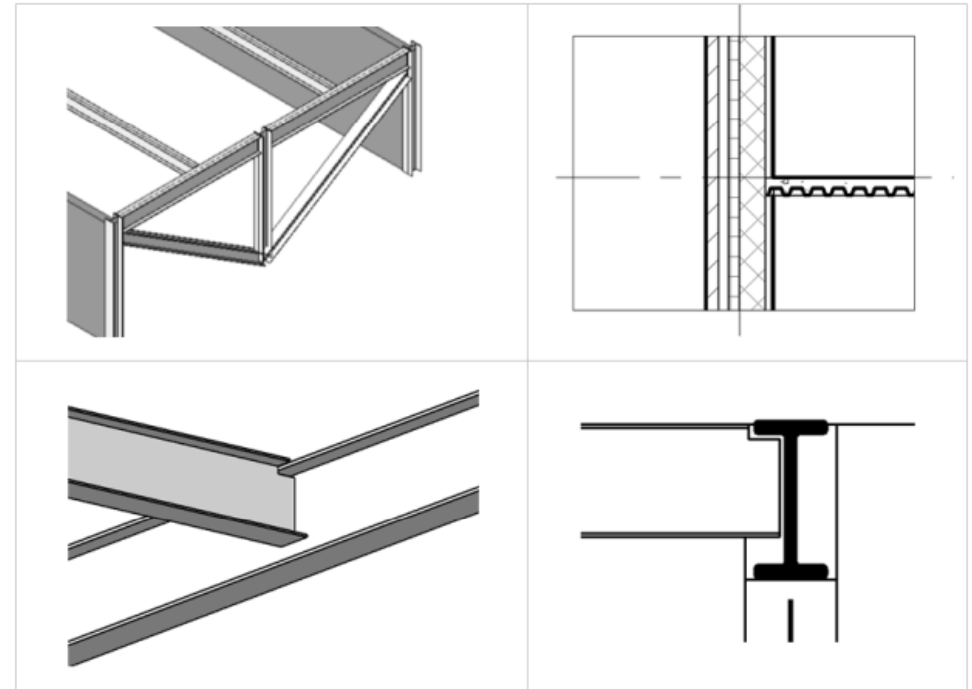
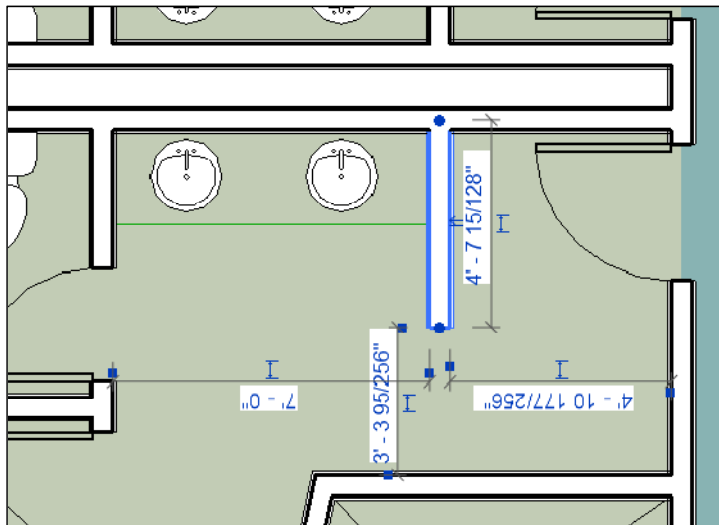
\*Indicates requested feature.

# Design Productivity

Autodesk Revit Architecture 2011

## Small Enhancements (Design)

- Temporary Dimension improvements
- 3D alignment
- Structural tools
- DWG fidelity\*



*Productivity tools to enable a smoother workflow*

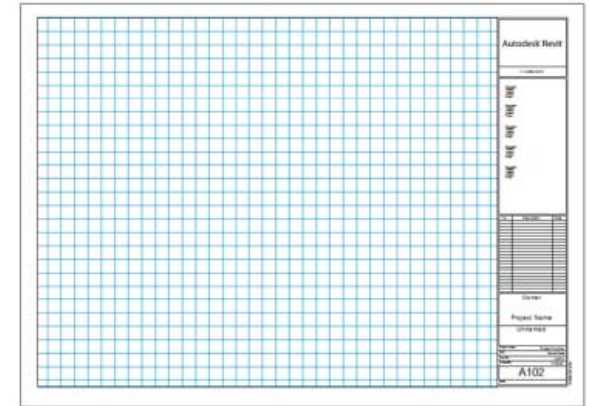
\*Indicates requested feature.

# Design Productivity

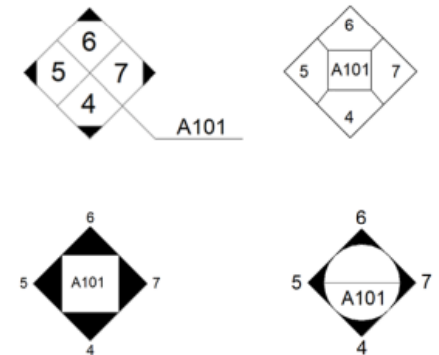
Autodesk Revit Architecture 2011

## Small Enhancements (Documentation)

- Custom Elevation Tags\*
- Text and Leader enhancements\*
- Sheet List improvements\*
- Sheet Guide Grids\*



1. Leader Improvements
- a. Text Note Border
- Bullets & Numbering



*Faster speed for your daily workflow*

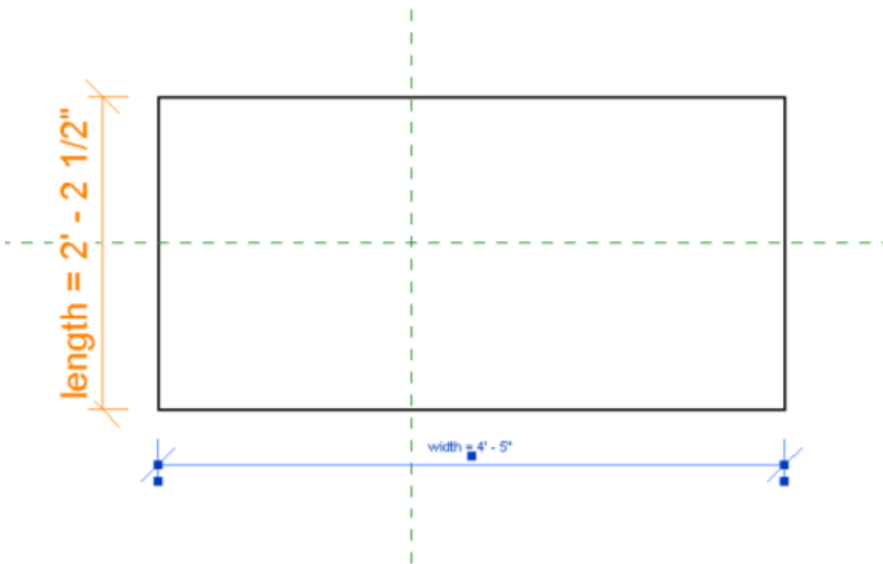
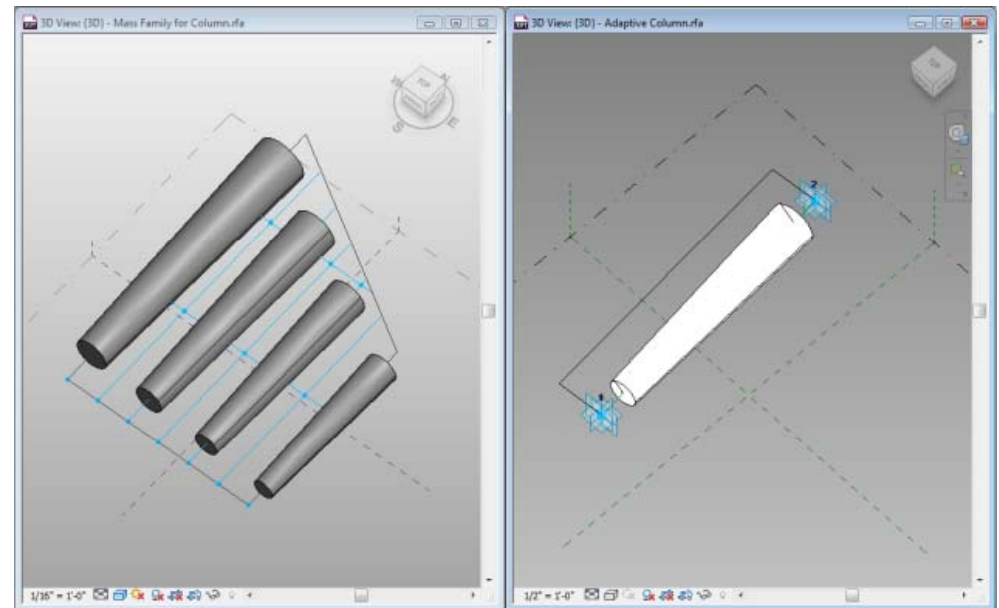
\*Indicates requested feature.

# Design Productivity

Autodesk Revit Architecture 2011

## Family Editor Enhancements

- Reporting parameters
- Loose-labeled dimensions
- Visual display of related parameters



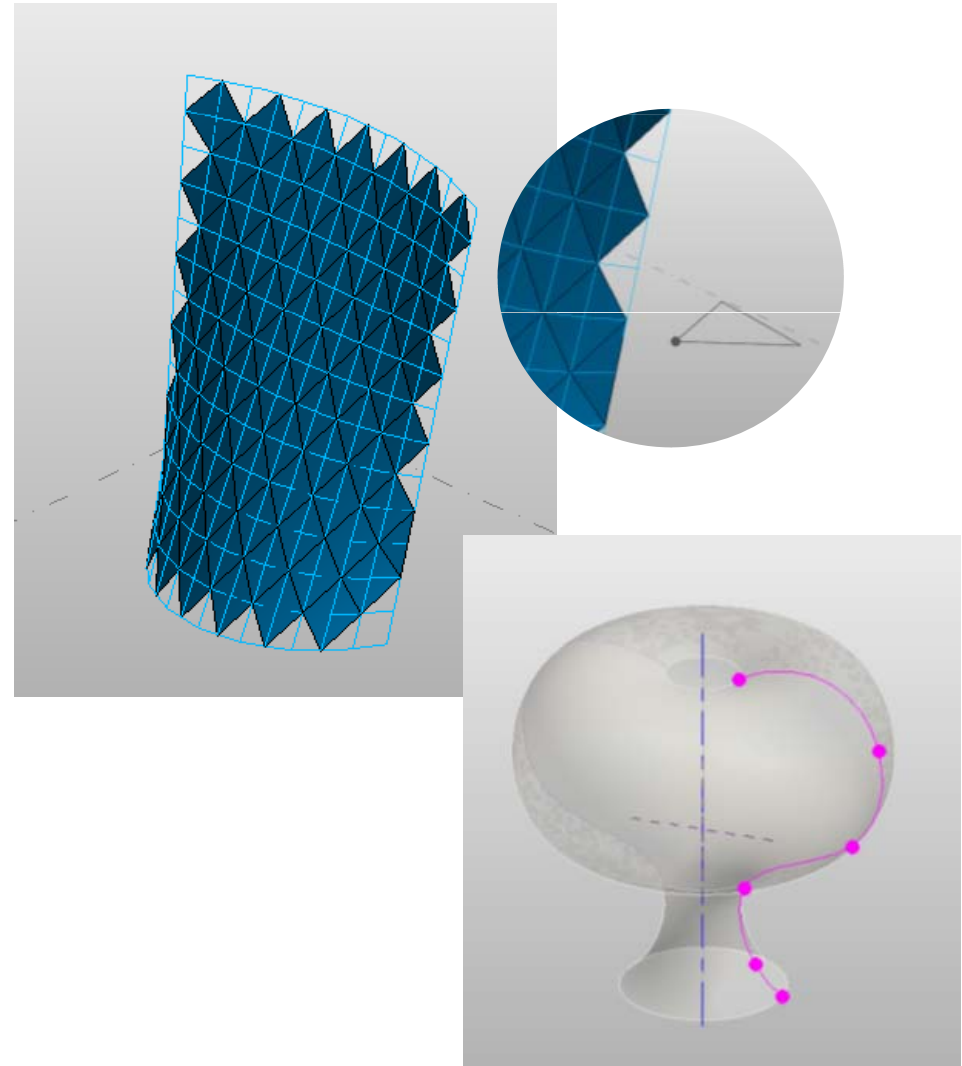
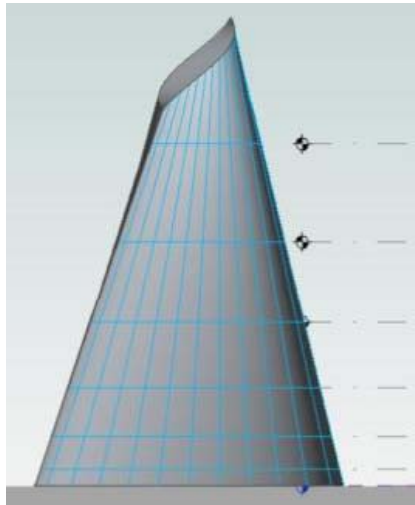
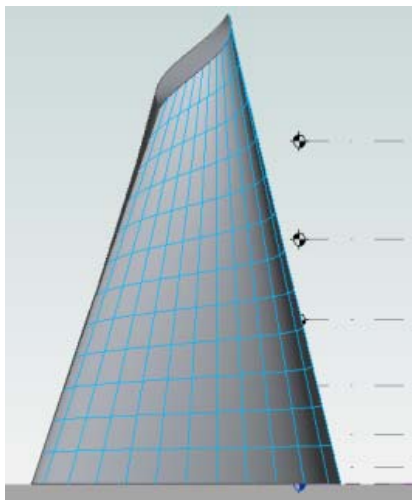
*Easier access to powerful family editor features*

# Design Productivity

*Autodesk Revit Architecture 2011*

## Conceptual Design Improvements

- Form-making and editing
- Surface rationalization
- Adaptive component



*Extending the capabilities of conceptual design workflows*

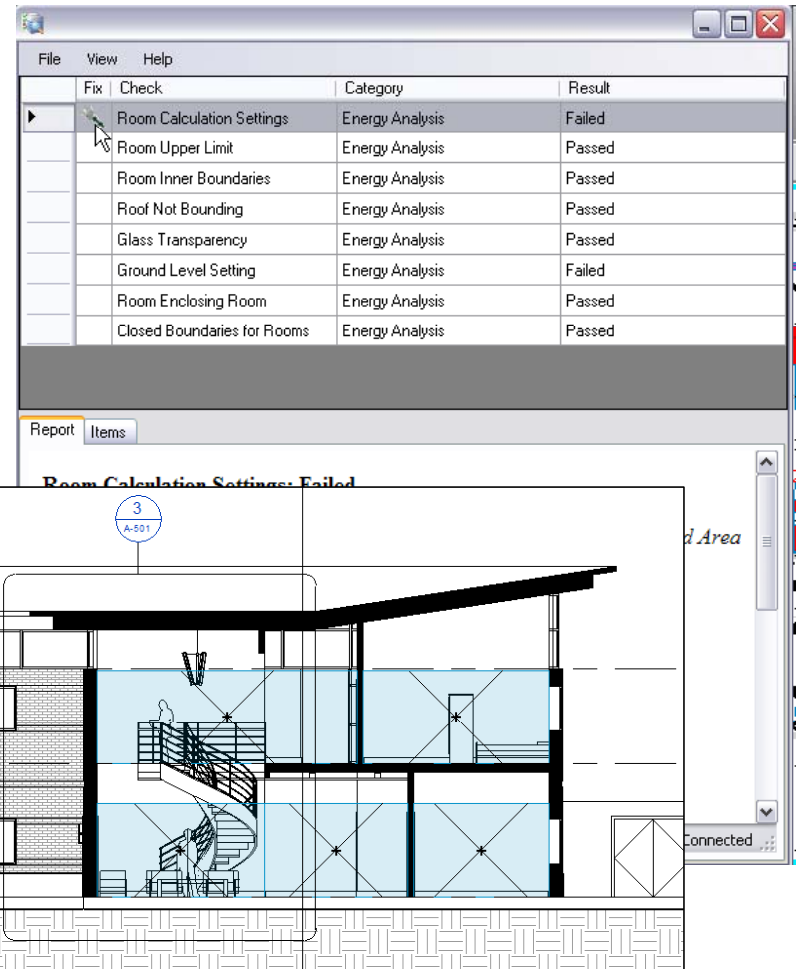


# Design Productivity

Autodesk Revit Architecture 2011

## Model Review

- Evaluate building information
- Promote company standards
- Help maintain model consistency



*Automate standards checking and error correction*

# Design Productivity

Autodesk Revit Architecture 2011

## Autodesk Revit DB Link

- Import/export model information
- Help maintain relationships
- Update graphic/nongraphic information



*Intelligent tools to help manage data in your project*

# Analysis and Visualization



Image courtesy of Cannon Design

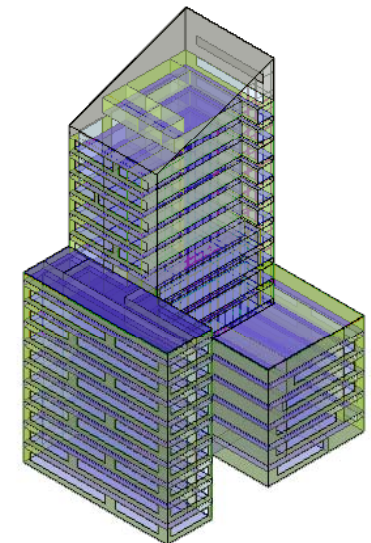
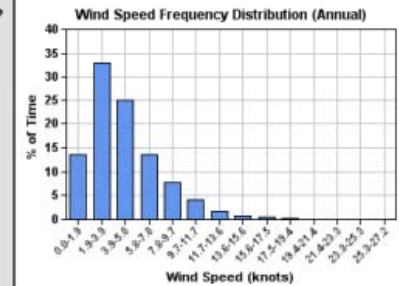
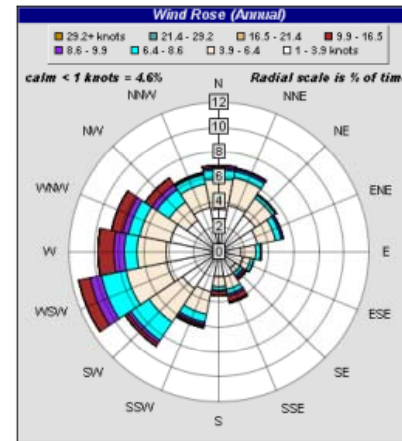


# Analysis and Visualization

Autodesk Revit Architecture 2011

## Access to Autodesk® Green Building Studio® Web-Based Services

- Whole building energy, carbon, and water analysis
- Global weather data
- Powerful cloud computing



*Extending BIM to Sustainable Design*



# Analysis and Visualization

*Autodesk Revit Architecture 2011*

## New View Styles

- Consistent Colors
- Realistic textures
- Ambient lighting



Realistic textures and ambient lighting



Realistic textures

*Working views for production and presentation*

# Analysis and Visualization

*Autodesk Revit Architecture 2011*

## Rendering Enhancements

- Background images\*
- Procedural textures\*
- Consistent materials
- Removal of 4 core rendering limit\*

*More efficient and compelling  
in-process renderings*



\*Indicates requested feature.

# Large Team Workflow and Performance



Image courtesy of Cannon Design



# Large Team Workflow and Performance

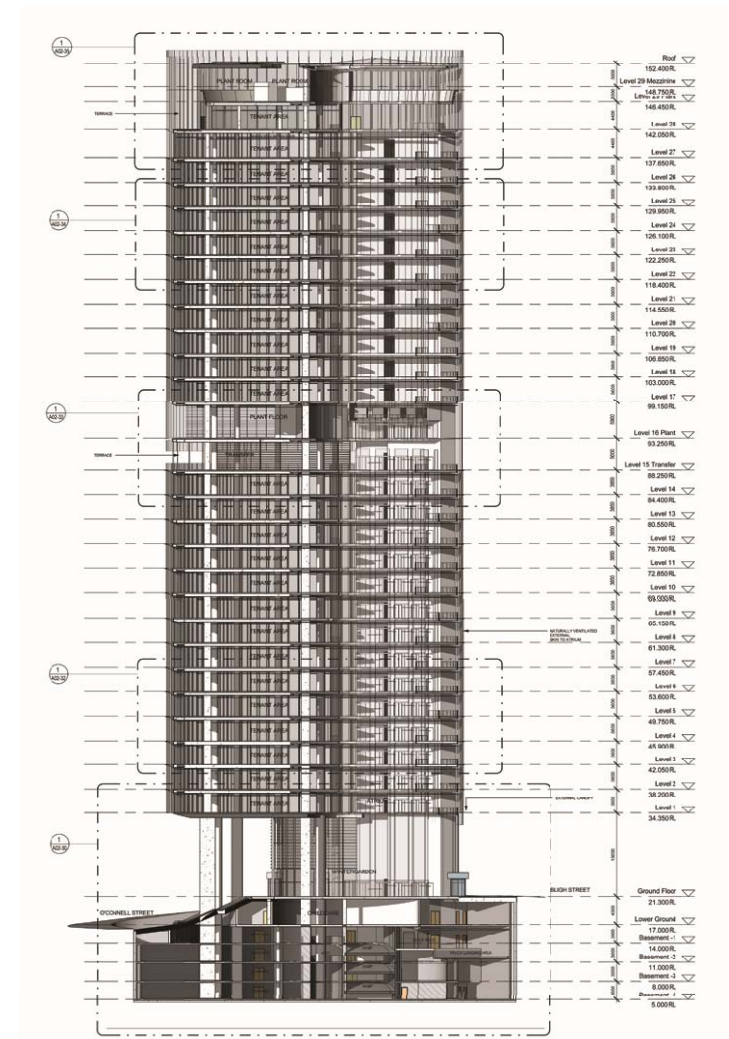
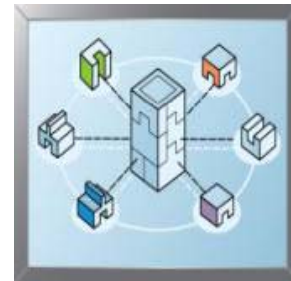
*Autodesk Revit Architecture 2011*

## Linked File Improvements

- Worksets control
- View filters
- Element tagging

## Performance Enhancements

- Application startup
- Model open
- Synchronize with Central file
- Linked files
- User interface reaction time



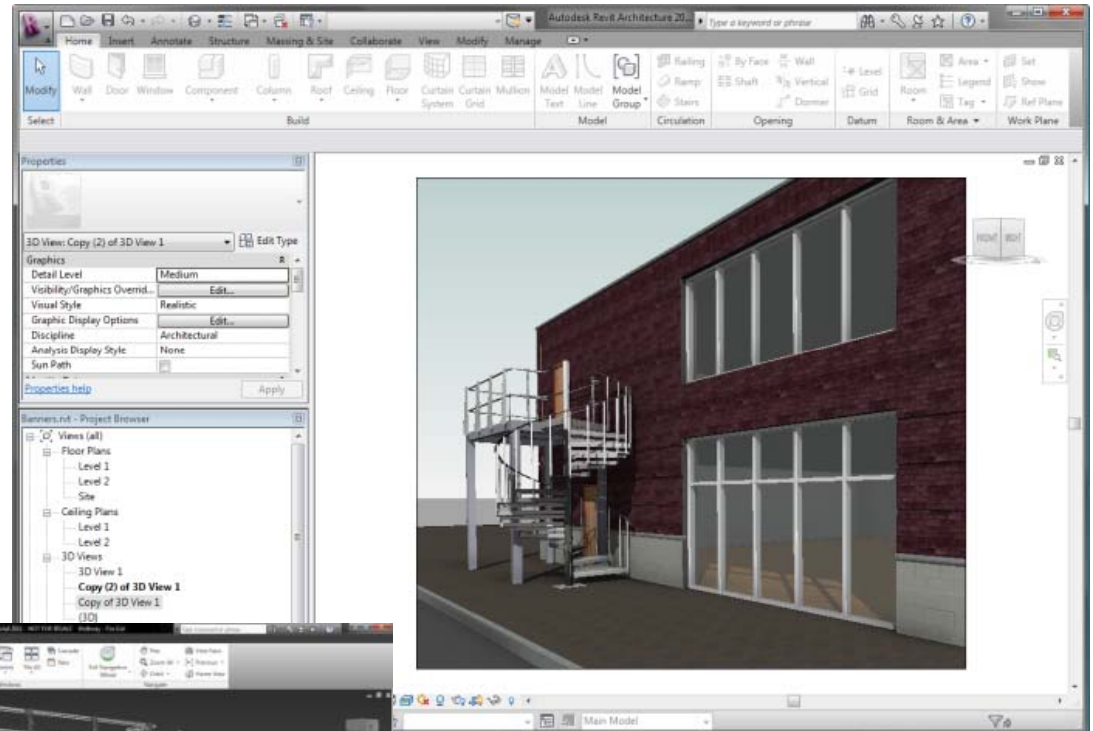
*More fluid workflows on large projects  
and with everyday tasks*

# Large Team Workflow and Performance

*Autodesk Revit Architecture 2011*

## Interoperability with Autodesk Inventor

- Improved data sharing
- Better Maintain visual fidelity
- Additional architecture, engineering and construction categories



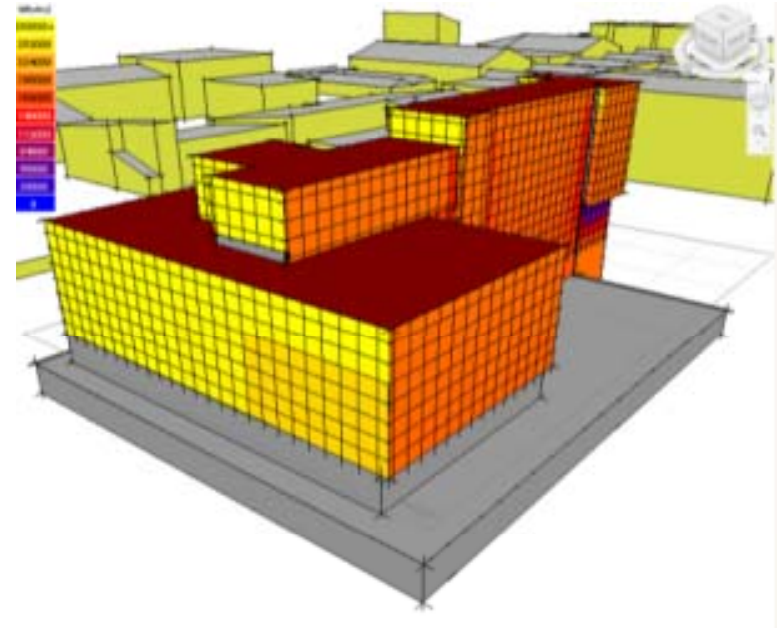
*Utilizing manufacturer-specific content geared to the architecture, engineering, and construction communities*

# Large Team Workflow and Performance

*Autodesk Revit Architecture 2011*

## API Enhancements

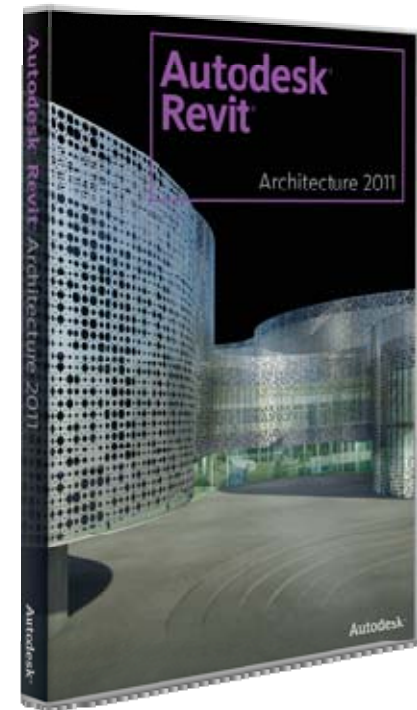
- Dynamic model update
- Analysis visualization framework
- Advanced selection and element filtering
- Model update on demand
- New UI tools
- Application idling event
- Custom error handling



*Cleaner integration between  
third-party applications and Revit-  
based software*

# Autodesk Revit Architecture 2011

- Design productivity
- Analysis and visualization
- Large team workflow and performance



# Autodesk®

Autodesk, AutoCAD, Autodesk Inventor, DWG, FBX, Green Building Studio, Inventor, and Revit are registered trademarks or trademarks of Autodesk, Inc., and/or its subsidiaries and/or affiliates in the USA and/or other countries. All other brand names, product names, or trademarks belong to their respective holders. Autodesk reserves the right to alter product and services offerings, and specifications and pricing at any time without notice, and is not responsible for typographical or graphical errors that may appear in this document. © 2010 Autodesk, Inc. All rights reserved.